



## STUDY MATTERS

---

January 29, 2026

Wake NCORP Website: <https://wakencorp.phs.wakehealth.edu/>



**Current Good Clinical Practice (GCP) certification is required for access to our REDCap database.** GCP certification dates in RSS always default to the 1st of the expiration month. **If you receive a notice from REDCap about your account expiring this is most likely due to an expiring GCP certification.**

You can upload new certificates to our website (<https://wakencorp.phs.wakehealth.edu/>) or you can email them to [NCORP@wfusm.edu](mailto:NCORP@wfusm.edu).

---

## Connect with us on Social Media!



**Wake  
Forest**  
**NCORP RESEARCH BASE**

A centralized research base  
in Winston-Salem, NC  
for Cancer Center affiliates and  
NCI-funded NCORP community sites.

Follow our *new*  
LinkedIn and X accounts for:

- ✓ Study Announcements
- ✓ Cancer Research Opportunities
- ✓ Results and Publications
- ✓ Research Base Events and News

UPDATES 

Contact Us:  
[NCORP@wfusm.edu](mailto:NCORP@wfusm.edu)

**X: @WF\_NCORP\_RB**

**LinkedIn: Wake Forest NCORP Research Base**

Website:  
[www.wakencorp.phs.wakehealth.edu](http://www.wakencorp.phs.wakehealth.edu)



## Upcoming Site Calls

You can also join site calls from our [Wake NCORP website](#). Click the call in the "Upcoming Events" section on the Home page or through the Calendar. You must be a registered user to join from the website.

If you are having trouble joining a call or have any other issues please email [NCORP@wfusm.edu](mailto:NCORP@wfusm.edu)

**\*\*Please note that your calendar may not update automatically if changes are made at a later date.**

## **Wake Forest NCORP RB Quarterly Call**

February 4, 2026 at 3:00 PM ET

[Click here to add the Quarterly Call to your calendar](#)

**WF2304-A172401 - COSMIC: Complementary Options for Symptom Management In Cancer (COSMIC): Assessing Benefits and Harms of Cannabis and Cannabinoid Use Among a Cohort of Cancer Patients Treated in Community Oncology Clinics**

March 9, 2026 at 3:00 PM ET

[Click here to add the WF2304 COSMIC Site Call to your calendar](#)

**WF-2201 - HYPOGRYPHE - Hypofractionated Radiotherapy vs Single Fraction Radiosurgery for Brain Metastasis Patients on Immunotherapy**

March 10, 2026 at 3:00 PM ET

[Click here to add the HYPROGRYPHE Site Call to your calendar](#)

## **Study Updates**

**(NEW!)WF-2502CD - STOP-VTE - Surgical Thromboprophylaxis Practices in Oncology Patients within the NCORP Network (STOP-VTE)**

## WF-2502CD STOP-VTE – Recruitment Material Now Available

Aligned with STOP-VTE (WF-2502CD) Amendment 1, Protocol Version Date 10/17/2025.

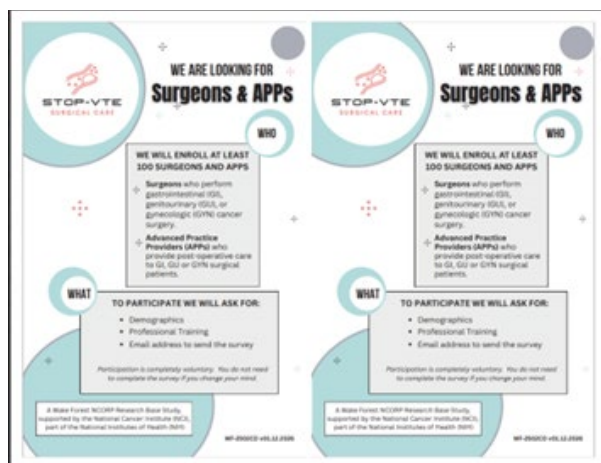
The following recruitment document was posted to the CTSU website on 01/27/2026.

**Recruitment Handout Half Sheet** – document contains STOP-VTE talking points to hand to potential participants. Sites may print the document front to back and cut in half or contact NCORP and request printed half sheets. The half sheet may be used in conjunction with the study flyer. The flyer may be posted in clinics; the handout may be given to potential participants.

### Front



### Back



### WF-2502CD Document Access:

- The protocol documents are available on the [CTSU](#) website.
- The *Helpful Guide* document is available on the [WAKENCORP](#) website.

If there are any questions regarding the WF-2502CD or to request printed handouts, please contact [NCORP@wfusm.edu](mailto:NCORP@wfusm.edu); Attn: WF-2502CD.

## (NEW!)WF-2402CD - CORRECT - Collaborative Oncology between Radiologists and Radiation Oncologists for the Evaluation of Contoured Targets

**We need your help!**

If your NCORP has not already completed a **feasibility survey**, please reach out to [NCORP@wfusm.edu](mailto:NCORP@wfusm.edu) to have one resent.

## WF-2403 COACH-APP - Building Capacity within the NCORP Network through an Education and Mentorship

## Intervention for Advanced Practice Providers (COACH-APP)

### WE WANT YOUR APPs FOR COACH-APP!

We have enrolled **19** of our goal of 70 APPs for this study. Please engage the Advanced Practice Providers at your NCORP site to see if they are interested in participating!

#### We are looking for APPs:

- That provide care to oncology patients at NCORP practices that are already recruiting to NCI sponsored trials
- That can dedicate 2 hours/month (30 mins per week max) to participate in study activities during the study duration (over a 12-month period).

A recruitment flyer is available on CTSU to distribute or post at your site.

Please email us with any questions at [NCORP@wfusm.edu](mailto:NCORP@wfusm.edu).

---

## Wake Forest NCORP Research Base Website

**Reminder:** Additional resources, **which are not CIRB approved**, are maintained on our Wake Forest NCORP RB website and **are not available on CTSU**. Note, these resources include a **Helpful Guide** for each study, which provides guidelines for the study team, as well as other study instructions.

**\*Remember to update your profile to include any new studies you may be involved in\***

We use this information for targeting email communications and surveys.

<https://wakencorp.phs.wakehealth.edu/>

Registering for an account will allow you to:

- Join site calls and other meetings from the Upcoming Events or Calendar sections
- Access study training materials
- View previous study meetings
- Download important study documents including training videos, study guides, and neurocognitive CRFs

**Once registered, you must update your user profile to sign up for study-specific mailing lists and meeting announcements, indicate your NCORP Community site, add your user roles, and update your GCP for database access.**

If you have any questions or need assistance with registration, please email [NCORP@wfusm.edu](mailto:NCORP@wfusm.edu).

---

## Accruals as of January 28, 2026

Open Studies	Name	Enrolled (Patients)	Change in Past 2 Weeks	Target (Patients)	Enrolled (non-patients)	Target (non-patients)
WF-1806	M&M	254	+1	300		
WF-1901	IMPACTS	235	+0	250	12	40
WF-2201	HYPOGRYPHE	53	+0	244		
WF-2301CD	CONNECT*	108 (pt/ caregiver dyad)	--	120 (dyads)		
WF2304-A172401	COSMIC	1012	+21	2000		
WF-2403	COACH-APP				26	97
WF-2501CD	PGA	--	--	117	5	99
WF-2502CD	STOP-VTE				7	100+
		Practices Enrolled	Change in past 2 weeks	Target (practices)	Enrolled (non-patients)	Target (non-patients)
WF-2303CD	HRSN	19	--	20	87	136

\*Closed to enrollment

---