

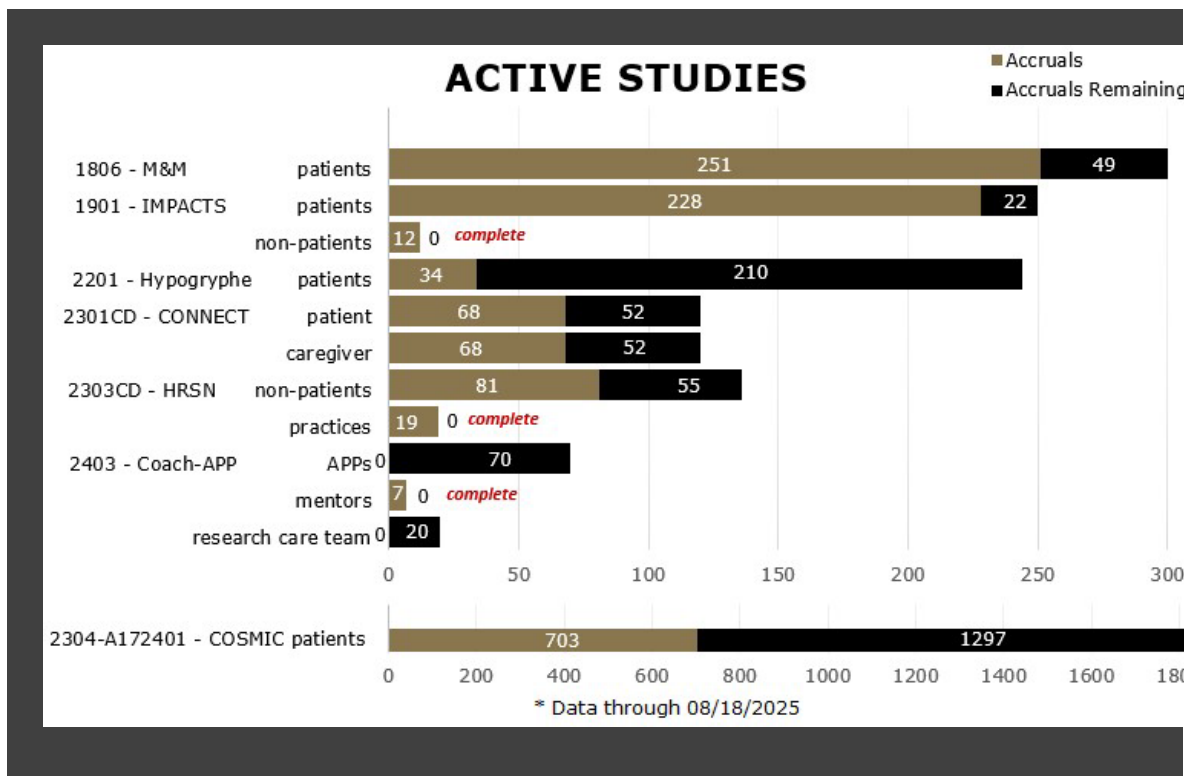


COMMUNITY CONNECTION

Quarterly Newsletter

August 2025

Study Accruals



Retirement Announcement: Tammy Vogler



After nearly 40 years of dedicated service to our institution, Tammy Vogler has retired! Tammy has been an important part of the Wake Forest NCORP Research Base Team for the past 14 years, beginning her journey as a Research Nurse and later transitioning into the role of site coordinator for numerous studies. Her clinical career focused on Oncology and Cardiology, serving patients of all ages—from Pediatrics to Adults. Tammy's commitment, compassion, and expertise have left a lasting impact, and she will be missed. She is very excited to spend the next chapter of her life traveling and spending time with her husband, children and 4 grandchildren. We wish her all the best!

Study Highlight: WF-2401 - Supportive Tailored Exercise Program for Survivors of Breast Cancer (STEPS-BC)



Coming Soon!

The purpose of this study is to determine if adding health education classes with exercise to usual cancer care; compared to health education classes alone, can help preserve ability to exercise, heart health, and quality of life following chemotherapy treatments.

Study Sample: n =120 participants (60 each group with 25 in each group participating in the sub-study). Up to 15 core sites will be trained for this study.

Study Duration: 24 weeks

Randomization: 1:1 home-based physical activity intervention (PAI) + healthy living intervention (HLI) vs HLI alone

Brief Eligibility Criteria:

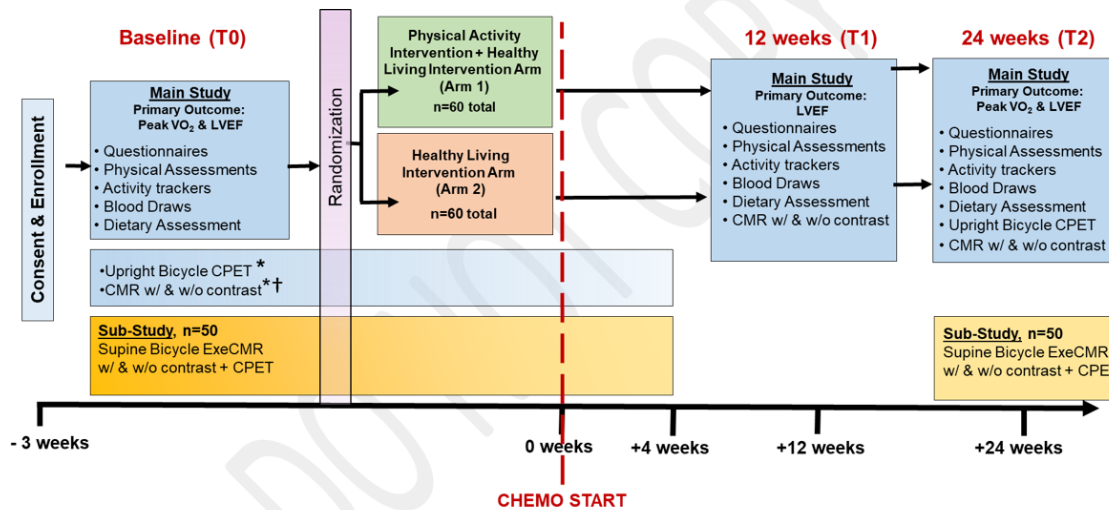
- Stage I-III breast cancer (including inflammatory and newly diagnosed, or locally recurrent but not metastatic breast cancer being treated with curative intent). All molecular subtypes (ER, PR, HER2, etc.) are acceptable.
- Age 18 to 85 years at enrollment.
- Scheduled to receive neoadjuvant or adjuvant cytotoxic chemotherapy. Patients must be enrolled ≤ 3 weeks from start of cytotoxic chemotherapy.
- ECOG performance status 0 – 2 (see Appendix)
- Able to walk at least 2 blocks without chest pain, dyspnea, shortness of breath or fainting per patient self-report.

Sub-study (VCU-Massey CCC* & AHWFBCCC only):** An exercise cardiovascular magnetic resonance (ExeCMR) via an MRI-compatible supine pedal ergometer test for each of the 50 sub-study participants (25 each arm) at Baseline (T0+1-4 weeks) and 24 weeks after initiation of treatment.

**VCU- Massey CCC (Virginia Commonwealth University-Massey Comprehensive Cancer Center) eligible sites: VA008, VA010, VA069, VA095, VA205, VA227, VA034, VA066, VA067, VA062, VA137, VA165.*

***AHWFBCCC (Atrium Health Wake Forest Baptist Comprehensive Cancer Center) eligible sites: NC002, NC275*

Draft Schema:



Study specific training will be provided on Day 3 (October 8, 2025) of the Wake Forest NCORP RB Annual Meeting in Asheville, NC. For questions or information about this study, please email NCORP@wakehealth.edu.

Study Highlight: Georgia CaRes NCORP



The Georgia Cancer Center in Augusta, Georgia is home to the Georgia CaRes NCORP. Dr. Sharad Ghamande is the Principal Investigator and Angela Goebel serves as the NCORP Administrator. Our affiliate sites include Dwight D. Eisenhower Army Medical Center, Phoebe Putney Memorial Hospital, Augusta Oncology Associates, and University Cancer and Blood Center.

Throughout our consortium, we are able to enroll in multiple types of trials including tissue acquisition trials for biomarker studies, cancer prevention, supportive care, and symptom management trials, treatment and imaging trials conducted by the NCI NCTN, health-related quality of life studies on treatment trials, and cancer care delivery (CCDR) studies.

We are members of the following research bases: Alliance, ECOG-ACRIN, NRG Oncology, SWOG, University of Rochester (URCC), Wake Forest NCORP, and the Children's Oncology Group.

We currently have over 50 NCI-sponsored trials open throughout our network. Our regulatory team works closely with our Investigators and Sub-Investigators to review potential studies for each site's patient population and open them as quickly as possible.

Like most NCORPs we have faced numerous challenges over the past several years, but we have addressed those challenges and been successful in several areas. We will continue to work diligently to provide access to cancer prevention and treatment trials to all patients in the state of Georgia and beyond.

CCDR:

Martha S. Tingen, PhD, RN, FAAN serves as the Co-I and Cancer Care Delivery Research (CCDR) lead for Georgia CaRes M/U Community Site NCORP (PI: Sharad Ghamande, MD). To date our site has participated in twenty CCDR studies. We currently have three studies open for which we are actively screening and recruiting. As a site designated to reach the underserved and under-resourced, our CCDR team works diligently to reach these populations. This includes AYAs, children, older adults, those residing in rural areas, and others who are underserved. Although the NCI metric is 30% accrual for these participants, our current rate across for CCDR studies is 47%.

Our team is comprised of two oncology clinical research nurses (RNs), an experienced operations manager who maintains the CCRP (Certified Clinical Research Professional) certification, the NCORP administrator, the CCDR lead, and the PI. Together, our team has over 70 years of research experience. We have two affiliate sites: Phoebe Putney Memorial Hospital and Augusta Oncology Associates. It is always a great pleasure to work with the Wake Forest Research Base on their studies.

Top Accruing CC Affiliates*

Patient Accruals

| Rank | Affiliates | Acc |
|-------------|--|------------|
| 1 | SC053 - Prisma Health Cancer Institute - Butternut (PRISMA) | 1 |
| 2 | MN019 - Mercy Hospital (METROMIN) | 1 |
| 3 | MI080 - West Michigan Cancer Center (CRCWM) | 1 |
| 4 | MN014 - Park Nicollet Clinic - Saint Louis Park (METROMIN) | 1 |
| 5 | DE038 - MedOnc Hematology Consultants PA (CHRISTIANA) | 1 |

* Data from 04/01/2025 - 06/30/2025

Top Accruing CCDR Affiliates*

Patient Accruals

| Rank | Affiliates | Accr |
|-------------|--|-------------|
| 1 | WI212 - ThedaCare Regional Cancer Center (WINCORP) | 6 |
| 2 | MO200 - Lake Regional Hospital (OZARKS) | 3 |
| | SC024 - Spartanburg Medical Center (UPSTATE) | |
| | SC036 - Prisma Health Cancer Inst.- Eastside (PRISMA) | |
| 3 | SC101 - Gibbs Cancer Center-Pelham (UPSTATE) | 2 |
| | WI011 - Aurora Saint Luke's Medical Center (AURORA) | |

* Data from 04/01/2025 - 06/30/2025

Non-Patient Accruals (excluding practice)

| Rank | Affiliates | Accr |
|-------------|--|-------------|
| 1 | WI212 - ThedaCare Regional Cancer Center (WINCORP) | 7 |
| 2 | WI011 - Aurora Saint Luke's Medical Center (AURORA) | 4 |
| 3 | MO200 - Lake Regional Hospital (OZARKS) | 3 |
| | MO042 - CoxHealth South Hospital (OZARKS) | |
| | SC024 - Spartanburg Medical Center (UPSTATE) | |
| | SC036 - Prisma Health Cancer Inst.- Eastside (PRISMA) | |

* Data from 04/01/2025 - 06/30/2025

Wake Forest NCORP Research Base 2025 Annual Meeting

October 6-8, 2025

Asheville, NC

Registration is Now Open!



- Once you register, you will be sent a confirmation email. Within this email is the link to the hotel for room reservations.
- **You must register for the meeting in order to receive the hotel reservation link.**

This meeting will be held *in person only* this year and the registration link will be posted on our website (and below) for members only.

Click here to register: <https://redcap.link/WFNCORPRB.2025AnnualMeeting>

Our Keynote Speaker will be Shellie Ellis, PhD. Dr. Ellis is a faculty member at the University of Wisconsin and is the Director of the Dissemination & Implementation Launchpad. She has implemented screening and treatment interventions in various

primary and specialty settings, spanning federally qualified health centers, hospital-owned outpatient clinics, and private practices in rural, urban, and suburban settings. She is a health services researcher and implementation scientist. She has expertise in quantitative and qualitative methodologies and decades of experience assessing behavioral determinants to design effective and efficient implementation strategies.

Information about Wednesday Half-Day Sessions (you may register for only one):

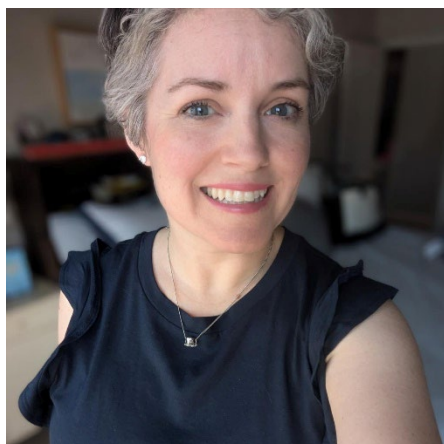
WF-2401-STEPS BC

Study specific training for coordinators; includes overview of study workflow and hands-on guidance for required patient physical assessments.

Half- Day New Investigator Workshop

This half-day new investigator workshop is open to all interested in learning more about how studies are developed through the WF NCORP RB and how ideas evolve with feedback from multiple perspectives. This session will focus on enhancing understanding of NCORP operations/support, feasibility assessment, and approval processes, with breakout sessions offering opportunities for feedback on new potential NCORP study ideas.

Meet Wake Forest NCORP Research Base Staff: Kim Blish



Kim did a PhD in Molecular Medicine and Translational Science here at Wake Forest, studying a potential tumor suppressor gene, and is now thrilled to be a part of NCORP. This marks a return to full-time research after 15 years in education. It's also a transition from bench science to clinical application and it combines her interests in serving patients with exciting research. She loves to talk about science while working on manuscripts as publications coordinator and in new concept/protocol development.

When not writing and sipping on coffee, Kim teaches high school physical science and biology and tries to keep up with her family. She's been married to Drew, a physical therapist, for 22 years and has two children. When you see her on Teams calls, she likely has her german shepherd-lab mix at her feet (or is trying to keep the dog out of trouble). Hobbies include: puzzles of all kinds, word games, photography and volunteering.

Top Accruing Investigators by Study

(from 04/01/2025 - 06/30/2025) Patient and Dyad Accruals

WF-1806

1. Kunal Kadakia, MD (2) - NC042
2. 4 investigators with 1 accrual each from MCRC (1), STROGER MU (2) & GEISINGER (1)

WF-1901

1. 6 other investigators with 1 accrual each from CARLE (1), HAWAII MU (1), ATLANTIC (2), KAISER (1) & MUSC MU (1)

WF-2201

1. Christina Cramer, MD (3) - NC002
2. Michael Chan, MD (2) - NC002
3. Amardeep Grewal, MD (1) - NC042

WF-2301CD (Patient-Caregiver Dyads)

1. Michael Humeniuk, MD (4) - SC101, SC024 (UPSTATE)
2. Shahid Waheed, MD (3) - MO200 (OZARKS)
Harsha V. Poola, MD (3) - WI212 (WINCORP)

WF2304-A172401

1. Molly Schumacher, APNP (10) - WI212 (WINCORP)
2. Jessica J. Croley, MD (6) KY104, KY106 (CORA)
Sunil Nagpal, MD (6) MI080 (CRCWM)
Michael Haughton, MD (6) SC053 (PRISMA)

Top CC Accruing Investigators

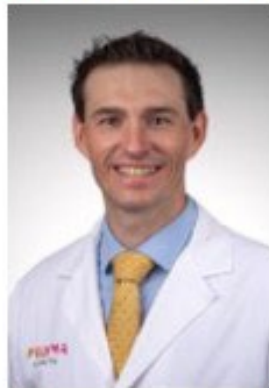
(from 04/01/2025 - 06/30/2025) Patient Accruals



Molly Schumacher, APNP
WI212, WINCORP (10)



Jessica Jones Croley, MD
KY104, KY106, CORA (6)



Michael Haughton, MD
SC053, PRISMA (6)



Sunil Nagpal, MD
MI080, CRCWM (6)

Top CCDR Accruing Investigators

(from 04/01/2025 - 06/30/2025) Patient and Dyad Accruals



Michael Humeniuk, MD
SC101, SC024, UPSTATE (4)



Harsha Vardhan Poola, MD
WI212, WINCORP (3)



Shahid Waheed, MD
MO200, OZARKS (3)

Publications & Presentations



Abstracts:

American Society of Radiation Oncology (ASTRO)

- **WFBCCC98322 - Carotid US:** High-risk Carotid Artery Ultrasound Findings in Head and Neck Cancer Survivors after Radiation Therapy: Results of a Prospective Study. Hughes RT, Tegeler CH, et al. Oral Presentation. September 27- October 1, 2025. San Francisco, CA.

- **WFBCCC98322 - Carotid US:** Feasibility and Acceptability of Carotid Ultrasound to Identify Head and Neck Cancer survivors with High Cardiovascular Risk after Radiation Therapy: Results of a Prospective Study. Hughes RT, Tegeler CH, et al. Poster. September 27-October 1, 2025. San Francisco, CA.

ASCO Quality Care

- **WF-1805CD - HN-STAR:** Impact of an ePRO-informed clinical decision support tool on clinical discussions during a follow-up visit for post-treatment head and neck cancer survivors: Results from the HN-STAR trial (WF-1805CD). Salz T, Kittel C, et al. Podium Presentation. October 10-11, 2025. Chicago, IL.

American Association for Cancer Research (AACR) - Science of Health Disparities Conference

- **WF-1802 - PCW:** Examination of longitudinal changes in work ability by race and income in men undergoing curative treatment for prostate cancer (PCW-1802). Sandberg J, Dressler E, et al. Poster. September 18-21, 2025. Baltimore, MD.

WF NCORP RB Quarterly Calls

The next call is scheduled for September 3, 2025.

[Click here to add the Quarterly Call to your calendar](#)

Community Engagement Committee

Updates from MaineHealth NCORP

Since becoming an NCORP Community Site in 2019, our team has steadily built a reputation for excellence in cancer research and community engagement. We are #1 in the country with over 145 patient enrollments in the Cancer Moonshot Biobank study, reflecting our strong commitment to advancing precision medicine. We've been honored to receive three consecutive phases of funding from the National Cancer Institute (NCI) to explore and overcome barriers to rural participation in clinical trials. We have applied for additional funding and are hopeful that we will be able to continue this local engagement initiative into Phase 4, with the aims of broadening awareness, boosting research involvement throughout rural Maine, and helping to close gaps in access to care. We are very excited to have recently activated a Wake Forest-funded sub-study to the larger WF-2304 COSMIC study. This smaller study is examining cannabis use patterns among cancer patients. Our investigators contribute meaningfully to national efforts, with four serving on NCI steering committees and task forces, and over 25 CTO personnel and investigators participating on more than 25 committees across NCI, NCORP, and NCTN. Our work spans the full cancer care continuum, including prevention, screening, therapeutic, and CCDD studies—underscoring our dedication to improving outcomes through research.



A program of the National Cancer Institute
of the National Institutes of Health

Copyright © 2025 Wake Forest NCORP Research Base, All rights reserved.

You were added to this email list when you were rostered to the WAKE NCORP Research Base

Our mailing address is:

Wake Forest NCORP Research Base
Medical Center Blvd
Winston Salem, NC 27157-0001

[Add us to your address book](#)

Want to change how you receive these emails?

You can [update your preferences](#) or [unsubscribe from this list](#).