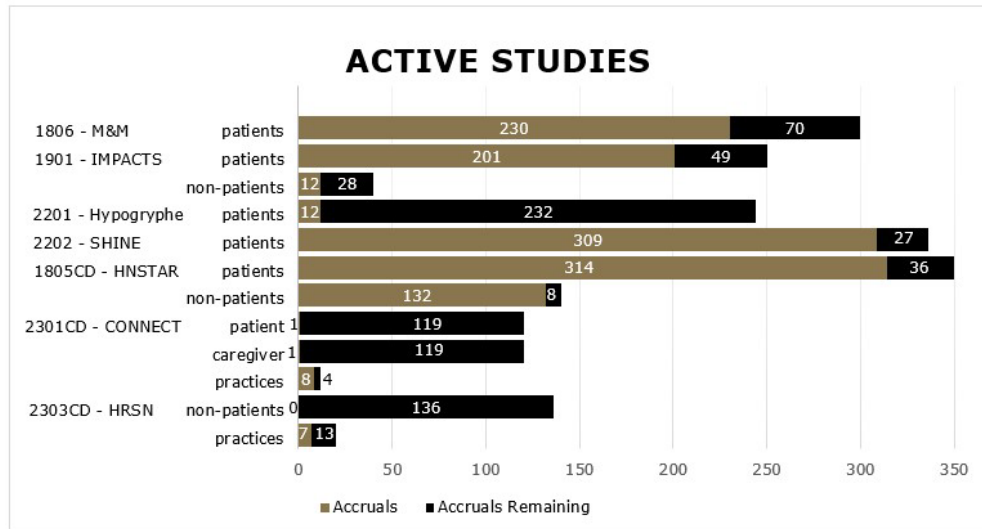


COMMUNITY CONNECTION

Quarterly Newsletter
November 2024



* Data through 11/22/2024

Study Highlight: HYPOGRYPHE WF-2201



HYPOFRACTIONATED RADIOTHERAPY VS SINGLE FRACTION RADIOSURGERY FOR BRAIN METASTASIS PATIENTS ON IMMUNOTHERAPY (HYPOGRYPHE)

Primary Objective

To compare the proportion of participants experiencing Grade 2 or higher Adverse Radiation Effects (ARE) within 9 months following randomization to single fraction stereotactic radiosurgery (SSRS) vs fractionated stereotactic radiosurgery (FSRS) in patients with brain metastases ≥ 2 cm in diameter or ≥ 4 cc in volume treated with concurrent immune checkpoint inhibitor (ICI) therapy.

Hypothesis

Reduction in Grade 2 or higher ARE from 22.5% with SSRS to 7.1% with FSRS (15.4% reduction).

Study Population

Melanoma, renal cell, non-small cell lung, small cell lung or breast cancer patients with brain metastases (<=15 metastases) currently receiving or planning to receive PD-1/PD-L1 targeted immune checkpoint inhibitor therapy within 30 days of SSRS/FSRS.

We also had amendment changes including:

- Allowing prior courses of SRS for brain metastases
- Offering central review prior to enrollment if a lesion is borderline for size criteria
- Allowing enrollment of patients with Small Cell Lung Cancer
- Clarifying that it is not necessary to wait for results of next generation sequencing prior to enrollment.
- Added new exclusion criteria to address patients with prior SRS for brain metastases who have a history of ARE and/or possible ARE or local failure at the time they are being evaluated for enrollment.
- Increased the allowable interval from the MRI used in treatment planning to start of SRS from 14 to 21 days
- Added a 5th factor as part of the minimization randomization process to incorporate prior courses of SRS for brain metastases (yes vs. no).
- Updated Section 7.1 (Schedule of Events)
- Updated CTSU language based on 01/25/2024 support logistical template language document.

Contact us at NCORP@wakehealth.edu if your site is interested in the study. Please note, your site must be IROC certified to participate or be willing to become certified.

Top Accruing CC Affiliates*

Rank	Affiliates	Accruals
1	IL168 - Carle Cancer Center (CARLE)	18
2	VA010 - VCU/Massey Cancer Center (VCU MU)	14
3	MI349 - Trinity Health IHA Medical Group Ann Arbor (MCRC)	13
4	AR012 - Mercy Hospital Fort Smith (OZARKS)	10
5	IL379 - North Shore Onc. Hem. Assoc. - Crystal Lake (Aurora)	8

* Data from 07/01/2024 - 9/30/2024

Top Accruing CCDR Affiliates*

Rank	Affiliates	Accruals
1	IL042 - Stroger Jr. Hospital of Cook County (Stroger MU)	3
2	NY045 - Montefiore Medical Center	2

* Data from 07/01/2024 - 9/30/2024

Site Highlight: Geisinger Cancer Institute NCORP

Geisinger

NCORP PI: Rajiv Panikkar, MD

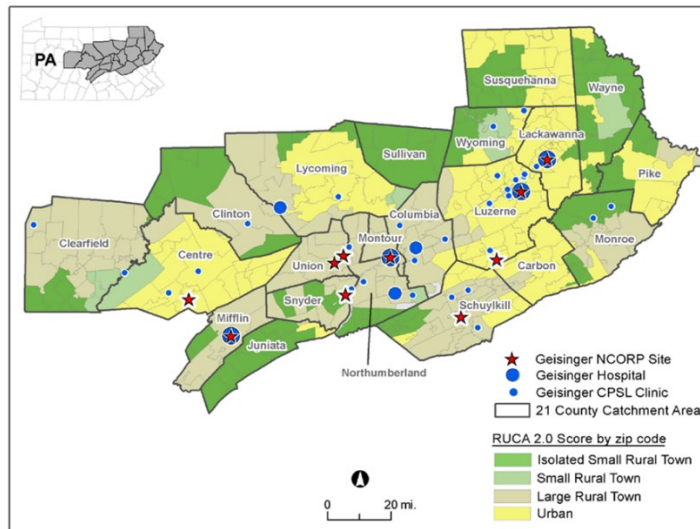
Wake Forest PI: Christian Adonizio, MD

NCORP Administrator: Heather Albertson, RN, BSN, CCRP

CCDR Lead: Mark Wojtowicz, MS, MBA

Geisinger Cancer Institute NCORP is a single integrated health system in Pennsylvania consisting of a multispecialty physician group practice, inpatient and outpatient facilities, and a health insurance plan. We serve a largely rural and older patient population throughout central and northeast Pennsylvania communities for over 100 years.

Rural Communities in Pennsylvania



Research-related facts about Geisinger Cancer Institute NCORP:

- Geisinger was among the first health systems in the country to implement the Epic EHR in the 1990s. We leverage a deep infrastructure in data analytics to help inform many of our research recruitment strategies.
- Our program has focused efforts on participation in cancer care delivery research protocols and involving as many of our NCORP affiliates as possible. We involve many of the innovative units from throughout Geisinger to support NCORP CCDR research, especially those that haven't been involved before.
- Our advance practice providers (APP) are integral to our NCORP recruitment strategies and achieving a balance of accruals between treatment accruals and cancer control and cancer care delivery accrual.
- Multidisciplinary Clinics (MDCs) are used to manage all major cancer types including brain, breast, lung, esophagus, stomach, liver, pancreas, colorectal, gynecologic, prostate, head and neck, sarcomas and neurologic. Research coordinators align with each of the MDCs.
- We have 9 locations as part of our NCORP network.

Do you have site or staff that should be recognized? Please submit recommendations to NCORP@wakehealth.edu with "Quarterly Newsletter Site/Staff Highlight" in the subject line.

Top Accruing Investigators by Study

(from 07/01/2024 - 09/30/2024)

WF-1805CD

1. Rafi Kabarriti, MD (3) - NY045, NY313, Montefiore MU
Sydney Spring, PA-C (3) - IL042, Stroger MU

WF-1806

Nine investigators accrued 1 from Greenville (2), Upstate (2), Geisinger (2), MCRC, IWORC & Essentia

WF-1901

1. Anjali Varma Desai, MD (3) - NJ028, NJ304, Atlantic
Jeffrey Berenberg, MD (3) - HI004, Hawaii MU

WF-2201

1. Michael Chan, MD (2) - NC002
Christina Cramer, MD (1) - NC002

WF-2202

1. Mary Helen Hackney, MD (14) - VA010 - VCU MU
2. Maria Grosse-Perdekamp, MD (8) - IL168 - Carle

Top CC Accruing Investigators

(from 07/01/2024 - 9/30/2024)



Mary Helen Hackney, MD
VA010, VCU MU (14)



Maria Grosse-Perdekamp, MD
IL168, Carle (8)

Top CC DR Accruing Investigators

(from 07/01/2024 - 9/30/2024)



Rafi Kabarriti, MD - NY045,
NY313, Montefiore MU (3)



Sydney Spring, PA-C
IL042, Stroger MU (3)

Meet Wake Forest NCORP Research Base Staff: Ruth Wright



Ruth has been with the Wake Forest NCORP Research Base since January 2019 and with Wake Forest since 2006. She monitors our main phone line and the NCORP email inbox. She is our liaison with sites and directs questions to the appropriate NCORP Research Base staff. She assists all of the NCORP Research Base staff in all aspects of operations. Outside of work, Ruth enjoys listening to local live bands, tubing and spending time with her family.

New Publications & Presentations

Manuscripts:

- **SHINE (WF-2202):** Shaffer K, et al. Factorial Trial to Optimize an Internet-Delivered Intervention for Sexual Health After Breast Cancer: Protocol for the WF-2202 Sexual Health and Intimacy Enhancement (SHINE) Trial. *JMIR Res Protoc.* 2024 Aug 19;13:e57781. doi: 10.2196/57781. PMID: 39159450; PMCID: PMC11369542.
- **Pilot Study:** Hughes RT, et al. Carotid ultrasound to identify head and neck cancer survivors with high cardiovascular risk after radiation therapy: rationale and design of a prospective, cross-sectional pilot study. *Future Oncol.* 2024;20(31):2331-2341. doi: 10.1080/14796694.2024.2386927. Epub 2024 Sep 4. PMID: 39230469; PMCID: PMC11520544.
- **LANDSCAPE:** Wang Y, Nightingale CL, et al. Recruitment of informal caregivers into community oncology research studies: results from the 2022 Landscape Assessment. *Oncologist.* 2024 Sep 12:oyae247. doi: 10.1093/oncolo/oyae247. Epub ahead of print. PMID: 39269312.

Abstracts:

- **ASTRO**
 - **Pilot Study:** Understanding Current Processes of Multidisciplinary Collaboration in Radiation Oncology Treatment Planning and Follow-Up across NCORP Network Practices. Farris, M. et al. *International Journal of Radiation Oncology, Biology, Physics*, Volume 120, Issue 2, e753
 - **Pilot Study:** The State of Peer Review Practice in Community Radiation Oncology: Results of a National Survey of NCORP Network Sites. Farris, M. et al. *International Journal of Radiation Oncology, Biology, Physics*, Volume 120, Issue 2, e528 - e529
- **Society for NeuroOncology**
 - **Ramipril (WF-1801):** WF-1801: Single arm pilot study of Ramipril for prevention of radiation-induced cognitive decline in glioblastoma patients receiving chemoradiotherapy. Society for NeuroOncology Conference. 2024, November 21-24.

Health Equity Core Updates

Health Equity Committee & Annual Meeting Updates

Our Annual Meeting held in October this year excelled at highlighting the work of the Health Equity Committee. Our keynote speaker, Dr. Karriem Watson was identified by this committee to speak and he gave an incredible talk spotlighting his work on the *All of Us Research Program*. His talk covered the program itself, success of Diversity, and the importance of engaging communities.



HEC panelists discuss Best Practices related to recruitment of minority and underserved populations and community engagement. The HEC Luncheon, hosted by Dr. Karen Winkfield and Carla Strom, provided a forum for those focused on Health Equity at their sites with an exchange of ideas on how to engage their communities.



ARM Training

On November 22, the WF NCORP and Health Equity Core along with the Atrium Health Wake Forest Baptist's NCI-designated Comprehensive Cancer Center sponsored an Advocates for Research in Medicine (ARM) training for their surrounding area. This was a half day training session for those individuals who wished to become a volunteer advocate. We had 19 participants who had a personal experience with cancer as a survivor, caregiver or previvor (those who present with genetic risk after testing). These individuals will be trained to work with researchers to advise, review and implement cancer research projects and disseminate information about these research efforts. Their training will be ongoing with online modules to complete at a later date.

If your site is interested in this type of training or would like a site visit by our Health Equity Core leadership you may reach out to NCORP@wakehealth.edu.

Wake Forest NCORP Research Base Annual Meeting Highlights



Keynote Speaker: Dr. Karriem Watson

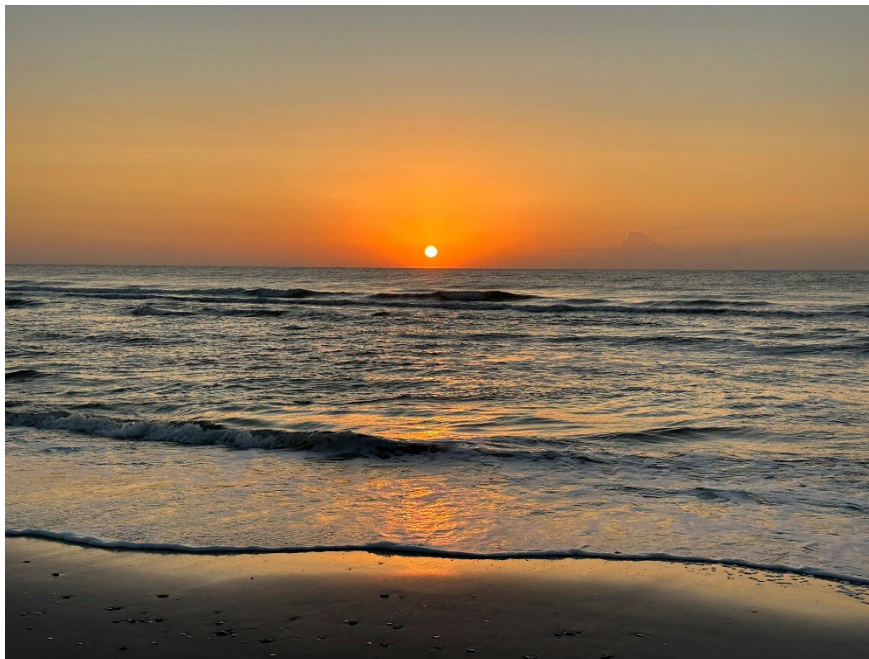




Health Equity Committee Lunch



Dr. Nadine Barrett - Just Ask! Workshop



WF NCORP RB Quarterly Calls

The next Quarterly call is scheduled for January 29, 2025.

Recipe: Chili-Stuffed Peppers



Ingredients

- 6 medium green peppers
- 1 pound lean ground beef (90% lean)
- 1/2 cup chopped onion
- 1 can (16 ounces) chili beans, undrained
- 1 can (10 ounces) diced tomatoes and green chiles, undrained
- 1 teaspoon chili powder
- 1/2 teaspoon salt, optional
- 1/4 teaspoon pepper
- 1/4 teaspoon cayenne pepper
- 3/4 cup shredded cheddar cheese

Directions

1. Cut tops off peppers and remove seeds. Place peppers in a large kettle and cover with water. Bring to a boil; cook until crisp-tender, about 3 minutes. Drain and rinse in cold water; set aside.
2. In a large skillet, cook beef and onion over medium heat until meat is no longer pink; drain. Add the beans, tomatoes, chili powder, salt if desired, pepper and cayenne. Bring to a boil. Reduce heat; cover and simmer for 5 minutes.
3. Spoon meat mixture into peppers; place in an ungreased 3-qt. baking dish. Cover and bake at 350° for 20-25 minutes or until heated through. Sprinkle with cheese.

*Recipe & photo credit: [Taste of Home](#)



A program of the National Cancer Institute
of the National Institutes of Health

Copyright © 2024 Wake Forest NCORP Research Base, All rights reserved.

You were added to this email list when you were rostered to the WAKE NCORP Research Base

Our mailing address is:

Wake Forest NCORP Research Base
Medical Center Blvd
Winston Salem, NC 27157-0001

[Add us to your address book](#)

Want to change how you receive these emails?

You can [update your preferences](#) or [unsubscribe from this list](#).

